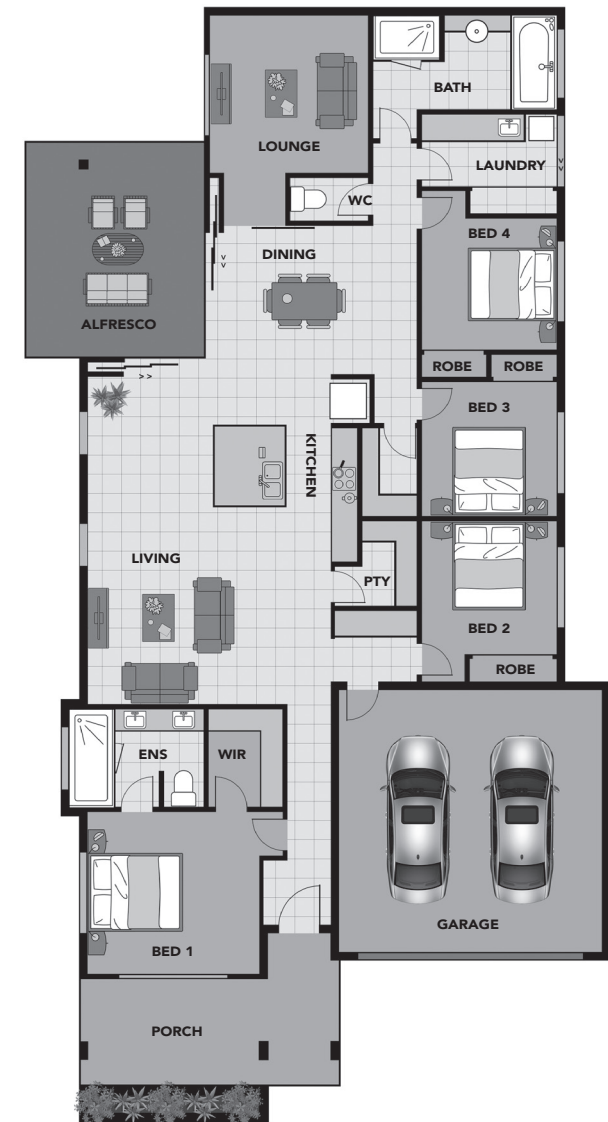


Tirano : 240m²



- Fully air-conditioned
- Open plan living
- Ensuite to main bedroom
- Stone bench top kitchen with walk in pantry
- Custom cabinetry throughout
- Exposed aggregate driveway
- Quality fixtures and fittings
- 2.7m ceiling heights



width 11.8m length 24m



Master
Builders

